

Ralph Sadleir School Fact Sheet

Headteacher: Mr Fanthorpe

Address: Station Road, Puckeridge, Herts, SG11 1TF

Phone number: 01920 821042

Email address: admin@ralphsadleir.academy



Ralph Sadleir School
Proud to Achieve

Moving On..... **My Transition Handbook**

Transition to Ralph Sadleir School



Hello Middle School

It may seem a long way off, but soon you will be thinking about the big move from your First School to Middle School.

Changing school is exciting.



You might also feel a little bit nervous.

There will be lots of changes and new experiences for you in September. All these feelings are okay and normal!

This is your 'Moving on Handbook'. You can use it at school or at home. It explains a lot about Middle School and will answer some of your questions.

Once you've finished, you'll know lots about your new school.



Learning Support Assistants



Mrs Wilson, Mr Doncaster, Mr Plant, Mrs Man, Miss Ellis, Mrs Ellis, Ms Ranford, Mr Haigh, Mrs Selby, Mr House

Office Staff

Mrs Gardner
Office Administrator



Mrs Hill
Finance Officer



Mrs Duce
Office Administrator



Here are pictures of the Senior Leadership Team, the Year 5 class teachers, the learning support assistants and the office staff.

Senior Leadership Team

Mr Fanthorpe
Headteacher



Ms Campbell
Deputy Head



Miss Devonshire
Assistant Head



Mr Maddox
Assistant Head

SENDCO
Mrs Wilson



Year 5 Class Teachers

Mrs Coppen
Class Teacher



Mrs Winter
Class Teacher



Miss Gordon
Class Teacher



Mr Brooks
Class Teacher



Questionnaire

What do you think it will be like at your new school? *Tick as many boxes as you like.*

☐ Good

☐ Fun

☐ Exciting

☐ Bigger than my old school

☐ Different

☐ A new challenge

When you think about moving up to Middle School, how do you feel? *Draw your face.*

What would you like to know about your new school?

Write down 3 things you are looking forward to:

1)

2)

3)

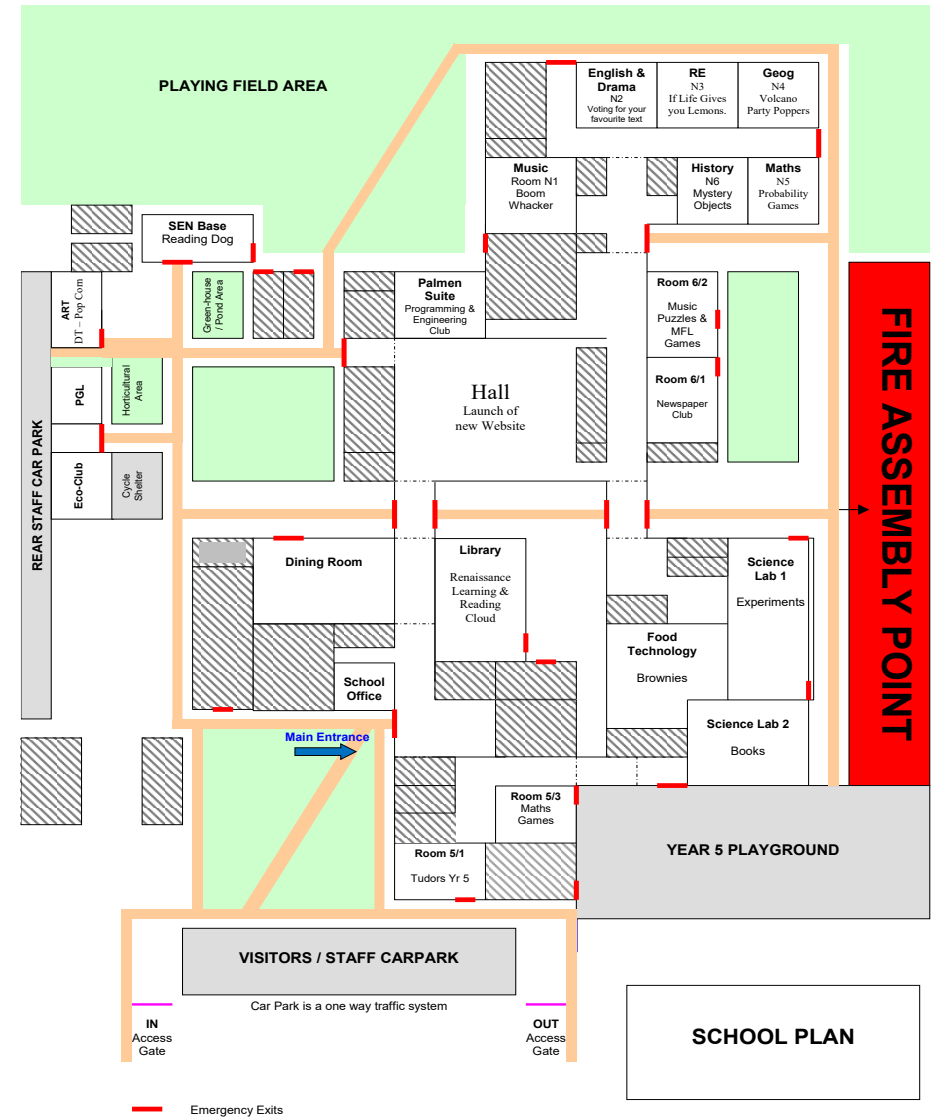
Questionnaire Cont.

What do you think you might need help with at school? *Tick as many as you like.*

- ☐ Writing
- ☐ Finding my way around
- ☐ Reading
- ☐ My timetable
- ☐ Homework
- ☐ Making friends
- ☐ Getting to know new people
- ☐ Something else



RALPH SADLEIR SCHOOL

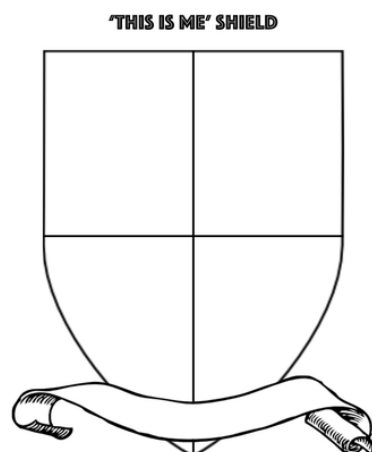


Summer Shield Challenge

We are really excited about your starting your Ralph Sadleir School journey and really want to get to know you in September.

We would like you to create a shield with information all about you in a creative way. You can use pictures, words, craft materials, whatever you like to make your montage all about you.

- What do you like to do?
 - What makes you special?
- Who are you?
 - Who is in your family?
- Who are your friends?
 - Where do you live?
- What is your favourite place?
 - What is your favourite food?
- What makes you smile?
 - Who makes you smile and laugh?



How I feel about coming to Ralph Sadleir School

It is completely normal to have lots of different feelings about coming to a new school, especially when you may not know anyone else. We want you to know that we are here for you and will help you with any concerns you may have.

You will need two different colouring pencils or highlighters. Colour in/highlight the phrases that you are looking forward to in one colour and use a different colour for those you are nervous about.

This will be really useful for us to see!

Making new friends	Learning a new timetable
Lunch time	Being on time
Having a different uniform	Break times
Finding my way around	Learning new subjects
Getting to school	Joining clubs
Meeting others my own age	School rules
Being with friends	Meeting my new teacher
Homework	Finding the work challenging
Meeting teachers	Getting changed for PE/ games
Being with older pupils	Meeting all my new teachers

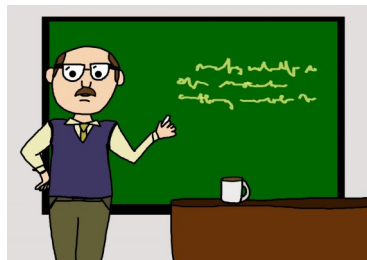
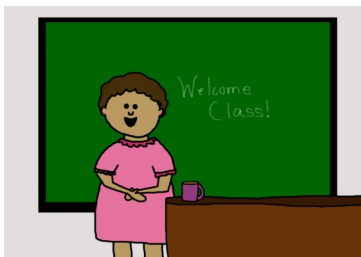
Timetable information



One of the bigger changes you will notice in Middle School is all the different teachers you will be taught by.

Whilst at your First School you may have been taught by just one or two teachers. During your time at Ralph Sadleir you will be taught by other teachers in the school. You will move around the school for some of your lessons. This may seem a little different but this is why you have your timetable and map. On your first day there will be lots of games and activities for you to do. You can always ask for help from any member of staff as it will just be Year 5. We are all here to help you.

Having different teachers may seem a little daunting, and you may be worried about having to talk to lots of new adults. But it is okay, we all feel a little nervous in new situations. Our current Year 5 have really enjoyed having specialist subject teachers teaching them. They have also enjoyed moving around the school.



Uniform

By putting on the Ralph Sadleir uniform, you are showing that you are part of our school and that no matter what, we are all one big team. It should give you a sense of belonging, an identity and make you feel part of the Ralph Sadleir community.

Your uniform teaches you to dress smartly and take pride in your appearance. One day you may work in a job that requires you to wear a uniform.

It is really important that all your school uniform has your **FULL NAME** in it.

Your Ralph Sadleir uniform should look like this:



A Ralph Sadleir School Pupil

At Ralph Sadleir School we believe that you are extraordinary and that education has the capacity and the possibility to change not only your life, but others too.

It is our aim to ensure that you are encouraged by high expectations and aspirations to achieve the highest standards.

We will offer you opportunities that inspire and encourage you to become independent learners, which will enable you to establish the values, qualities, skills and knowledge you will need to achieve success, gain fulfilment and become lifelong learners.

Every child at Ralph Sadleir aims to have the following Ralphie Values:

Respect

Achievement

Learning

Perseverance

Happiness

Independence

Encouragement

Homework



Homework is great! It allows you to explore new topics before you are taught them and it will develop and deepen your understanding on topics you are covering in class.

For example, you could be set exciting projects in Humanities, be asked to use your imagination and create a story in English or investigate and prove a theory in Science. Homework is your chance to become the next David Attenborough, Nikki Lilly, Dr Chris Van Tulleken or Roald Dahl.

You will be expected to complete 4/5 reads a week; which will be signed into your reading log by a parent/carer.

Homework is set on Google Classroom. Each tutor will have their own Google Classroom. Do not worry about this, we will help you to join and show you how to use it.

Why is homework important?

Homework is really important because it shows your teacher whether you have understood the work or not and shows how you can work independently.







REMEMBER - always ask for **HELP** if you need it!

We are here for you!

Equipment

At your First School, most of the equipment you need is kept in the classroom. At Middle School you will be expected to have all your own pencils and pens. You will have to carry these around with you.

Here is an example of a check list that you could use, to make sure you have everything with you each day.

School Ready Checklist	
<u>In my school bag I need to pack:</u>	
<input type="checkbox"/>	Pencil case 
<input type="checkbox"/>	Reading book 
<input type="checkbox"/>	Homework 
<input type="checkbox"/>	Snack & lunch box 
<input type="checkbox"/>	Drink 
<u>I might also need to take to school:</u>	
PE kit 	
Name.....	
Class.....	



At Ralph Sadleir School we expect you to have for every lesson, pencil case, reading book and your general note book (GNB).

It might seem like a lot to remember, but try not to worry about it. You can write a list of the things you will need each day - your parents/carers could help you. You could then tick them off as you pack them into your school bag.

Equipment I will need at Ralph Sadleir

In my pencil case I will need:

- ◇ Two handwriting pens (no biros allowed)
- ◇ Pencil
- ◇ Ruler
- ◇ Sharpener
- ◇ Eraser
- ◇ Colouring pencils (optional)
- ◇ Highlighters (optional)



There is lots of other equipment you might need too!

Hints and Tips:

It's a good idea to pack your bag the night before!

